



KÖMMERLING®

PASSION FOR WHAT WE DO



KÖMMERLING

GERMAN uPVC WINDOW & DOOR SYSTEMS

PASSION PEOPLE PROFILES



"As an owner-managed company, our aim is to develop in a sustainable and growth-led manner. For us, the customer is at the heart of everything.

The distinctive profine approach rests on attention to quality, innovative strength, customer-led production and service, efficient processes and an awareness of our responsibilities.

Striving for all-round excellence is what drives us, day in and day out. Our skilled and highly motivated employees are the foundation of our success – as are the close partnerships we maintain with our customers.

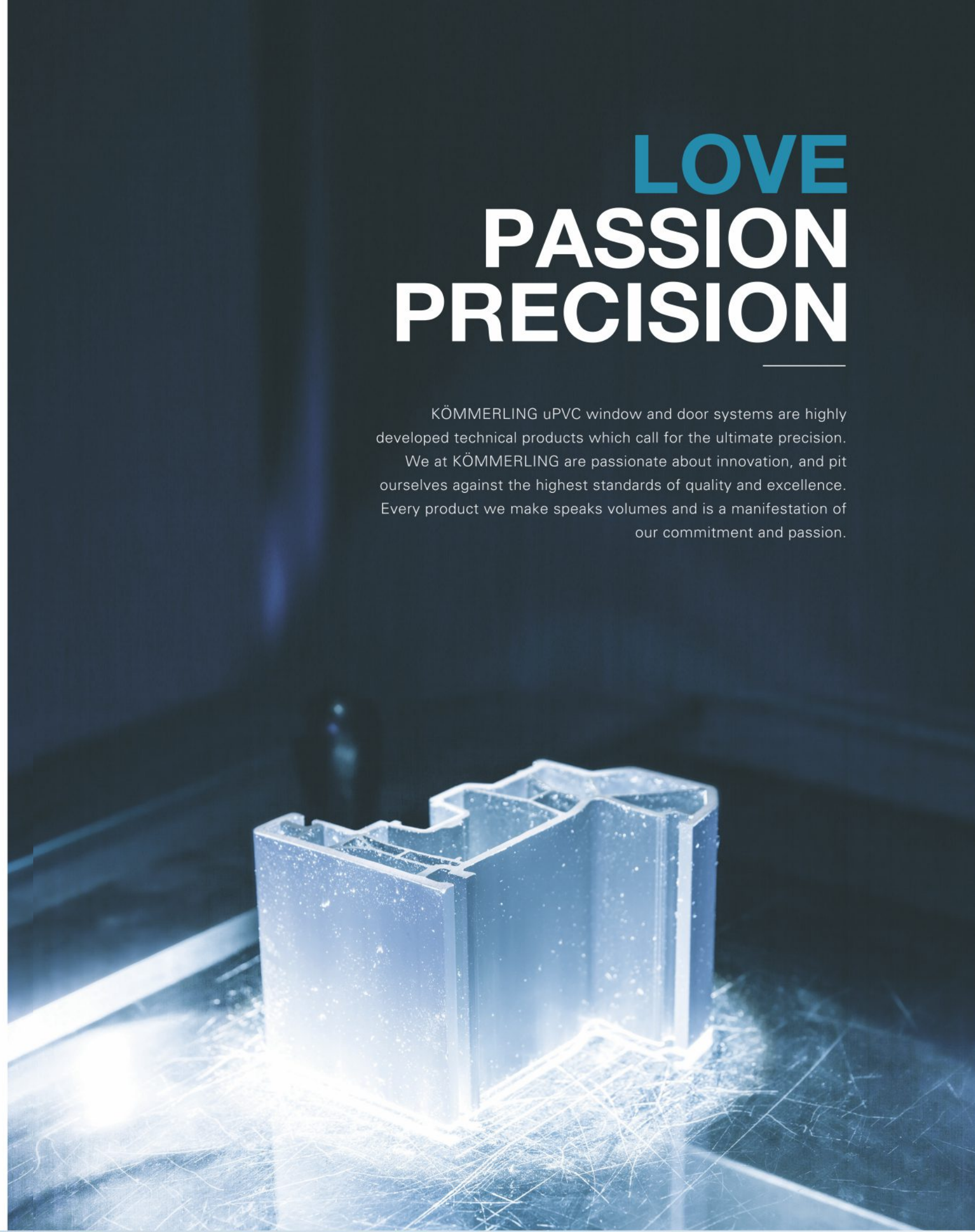
We are convinced that with these strong values we will achieve our goal: we want to be the world leader in brand profiles and sheet systems."

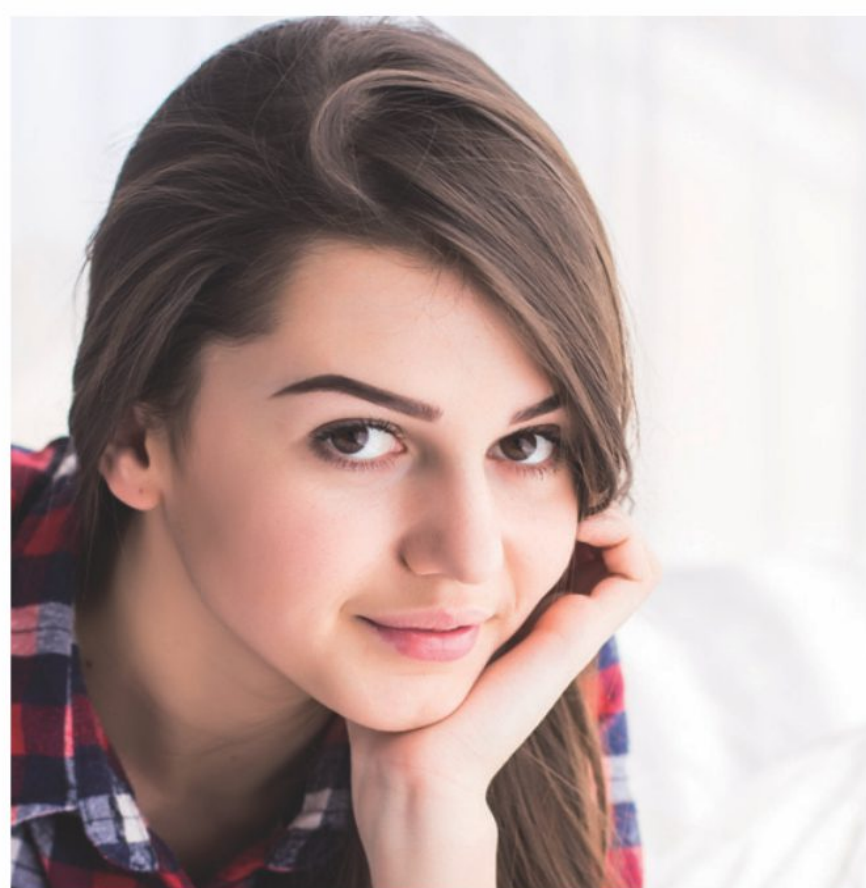
Dr. Peter Mrosik,
Owner and CEO
profine GmbH
International Profile Group

LOVE PASSION PRECISION

KÖMMERLING uPVC window and door systems are highly developed technical products which call for the ultimate precision.

We at KÖMMERLING are passionate about innovation, and pit ourselves against the highest standards of quality and excellence. Every product we make speaks volumes and is a manifestation of our commitment and passion.





MILLIONS OF SATISFIED CUSTOMERS

There's someone
behind every
window.



HISTORY MAKES THE FUTURE

Today, the company founded by Karl Kömmerling in 1897 is a strong brand of the profine group and its products are supplied in some 50 countries of the world.

KÖMMERLING has an outstanding reputation for high quality and advanced technologies. It has set itself the goal of manufacturing window and door profiles for demanding applications, while equally focussing on aesthetic aspects. The brand aims to deliver the highest technical and physical performance values, together with an extremely long service life and minimal care and servicing requirements.



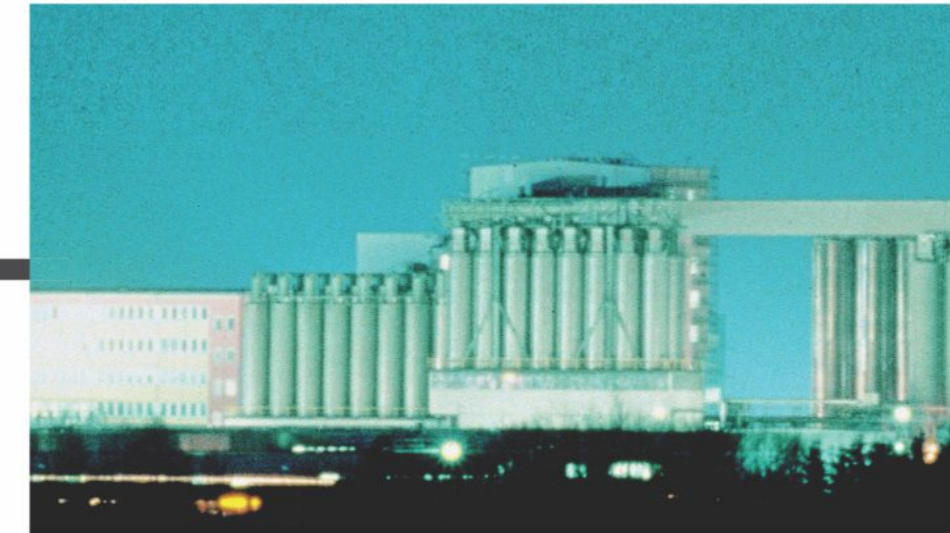
1897

Company founded
by Karl Kömmerling



1952

Start-up of
uPVC products
manufacture



1967

Manufacture of
uPVC window profiles
and sheets



2013

uPVC profiles
manufacturing
begins in India



KÖMMERLING®

PROFESSIONAL GERMAN uPVC WINDOW AND DOOR SYSTEMS



KÖMMERLING is a world that was created over a century, thanks to the drive and vision of its founder.

Today, our company is one of the most important and most recognized in its sector worldwide.

This success has been possible only because of our fundamental values on which this company was founded, and which are still guiding all of our decisions. In this day and age, more than ever, competence, willingness, quality and commitment guide us, so that we can ensure that our loyal and trusting customers can count on a reliable and strong partner to build their future and help improve their standard of living without damaging the environment.

We invite you to join our world.

HIGH PERFORMANCE EXTRUSION AND CRAFTSMANSHIP

Over years, we have invested in versatile, state-of-the-art production technologies. Our production plants throughout the world are equipped with advanced extruders, and this is how we are able to safeguard our product quality standards and respond rapidly to changes in market requirements.

In India too, profine has set up a state-of-the-art manufacturing facility at Vadodara, Gujarat, with machinery from Battenfeld, Germany and tooling from Greiner. The large scale automatic mixing equipment conducts the pre-treatment of the raw material scientifically and accurately. The top-end equipment ensures the quality guarantee of brand KÖMMERLING. Apart from extrusion lines, our manufacturing facility also has a lamination set-up for producing wood finish profiles.

Highly Efficient Logistics

- Sufficient stock guarantees the satisfaction to all demands of the orders.
- Efficient logistics distribution ensures products are delivered in time and as the customer requires.



BUILDING SUPERIOR KNOWLEDGE

KÖMMERLING is well known for its high quality and excellence globally. To maintain that trust, profine India, through its technical centre 'profine Academy' at Vadodara extrusion facility, provides skillful training to the workforce under international guidelines and standards.

Experienced trainers are devoted for arranging the training lessons. KÖMMERLING shares its valued experience and know-how gathered in the last 50 years. Training content includes knowledge about window manufacture and technology, operation of assembly machines, fixing of hardware, window and door design and installation procedures.



LEADING EDGE BREAKTHROUGHS

HIGH WIND LOAD PERFORMANCE

KÖMMERLING windows successfully withstand high wind load and pressure even during typhoons. The installation of KÖMMERLING windows in high-rise buildings has been very successful.



AIR TIGHTNESS

Scientific design of KÖMMERLING window systems avoids the penetration of outdoor air, thus keeping the home dust free.



SOUND INSULATION

The noise levels especially in areas with heavy traffic (e.g. near airports) can be considerably decreased by combining the uPVC profiles with specially insulating glass panes.



WATER TIGHTNESS

KÖMMERLING uPVC windows do not allow any water leakage, no matter how heavy the rainstorm is. Even on the coastline, they have proven their absolute effectiveness.



LONG LIFE & LOW MAINTENANCE

KÖMMERLING
uPVC windows do
not draw any
maintenance costs.
They do not rot or
corrode even in
tropical and coastal
weather conditions.
KÖMMERLING
profiles require
minimal
maintenance to
keep frames in top
condition.



SECURITY

KÖMMERLING
uPVC windows,
with intelligent
multi-point
locking systems,
offer superior
security.



DESIGNED FOR EXTREME WEATHER CONDITIONS

KÖMMERLING uPVC
profiles are subject to
extreme weather
conditions viz.
extensive cold, salty
sea air, long storm
periods and intensive
exposure to sunlight.
The highly developed
KÖMMERLING
material compound
Komalit-Z is a high
impact resistance
material, specially
made for tropical
climates.



**THERMAL
INSULATION**
KÖMMERLING
windows have
been tried and
tested in
tropical and cold
areas.
Outstanding
thermal
insulation
distinctly
realises a lot of
energy saving,
both in cold and
warm weather.



PROTECT YOUR HOME, PROTECT HUMANITY'S HOME

ENVIRONMENTAL PROTECTION AND SUSTAINABILITY

uPVC windows reduce global CO₂ emissions markedly due to their outstanding thermal insulation properties. But we go further. For our synthetics, we do not use lead as a stabiliser in our virgin material but instead are committed to using an environmentally friendly calcium-zinc formulation. For years, we have been involved in the industry-wide recycling of old uPVC windows. Therefore, as well as raw material, we also use recovered materials – without compromising on product quality.



greenline 

GREEN INNOVATION

greenline is a lead-free calcium-zinc stabiliser included in our uPVC formula to provide high quality window profiles that adhere to environmental standards and are ecofriendly. The generation of lead-free uPVC profiles safeguards the environment for our future generations.



CUTTING-EDGE SYSTEMS CONSIDERED BEST THE WORLD OVER

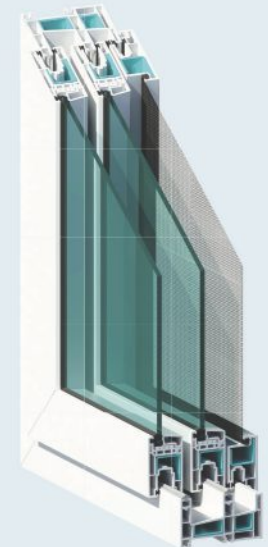


GOLD ASEA SYSTEM

- A universal system to make outward opening and inward opening windows.
- Compatible glazing and gasket structure accepts glass from 5 to 24 mm.
- Pre-positioned thermal chamber gives excellent insulation.
- Unique design of T-style transom can realize the ideal joint in both welding and mechanical coupling.
- Co-extruded glazing bead with lips tightens the sealing and ease the assembly work.

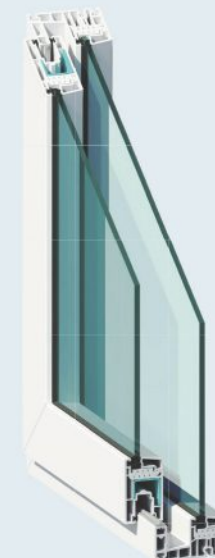
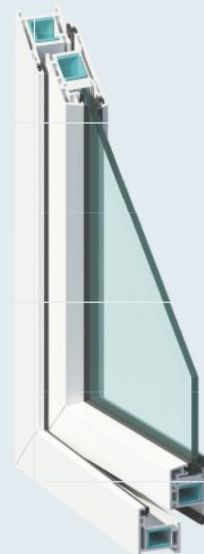
SYSTEM ORTA

- A very successful horizontal sliding system comprises of both window and door sashes making the system more economical.
- Accepts glass thicknesses from 5 to 20 mm.
- 4 frames are available from one system to meet various demands.
- Slope rebate of frame assists in draining out water quickly.
- Co-extruded glazing bead with lips tightens the sealing and ease the assembly work.
- Provision of mosquito net.



PROVENT SYSTEM

- Slim but highly reliable, functional, 3-chambered profile.
- Economical and unique casement series for outward open windows.
- Accepts glass thicknesses from 5 to 20 mm.
- Steel reinforcement for maximum structural performance, security and durability.
- Multiple use of sash profile can be used as transom or mullion



SYSTEM ORTA PLUS

- Economical and unique multi-chambered sliding window and door system.
- Stronger, more energy efficient system.
- Mono track and fixed frame.
- 2 frame system (without reinforcement) to meet various demands.
- Slope rebate of frame assists to drain out water quickly.
- Co-extruded glazing bead with lips tightens the sealing, ease working on assembly and increase productivity.
- Provision of mosquito net.

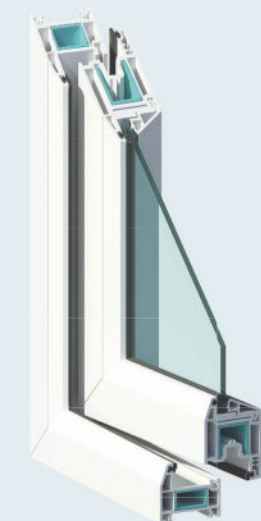


SYSTEM SF2

- It is well known as the strongest sliding door system in the field.
- 2.8 mm wall thickness makes it unique among the profiles available.
- Accepts glass thickness from 5 mm up to 24 mm.
- Mainly used for big size partition doors or big windows in rigorous surroundings, high-rise buildings, designed for higher wind loads.
- Possibility of additional tracks.

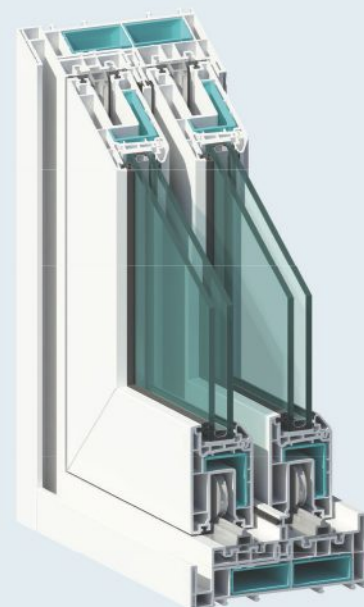
TILT AND TURN WINDOW AND DOOR SYSTEM.

- 58 mm Tilt and Turn window or door system.
- 3 mm wall thickness brings remarkable strength.
- Pre-positioned thermal chamber gives excellent insulation.
- Slope rebate helps to drain out water.
- 4 side locking system to enhance higher security.



LIFT AND SLIDE DOOR SYSTEM

- Excellent performance sliding door system.
- Installation width of frame 174 mm and the door sash of 62 mm.
- Strong and sturdy sash with 2.8 mm wall thickness.
- Accepts glass thickness from 12 mm to 36 mm.
- Unique solution of aluminium threshold allows barrier-free access.
- Maximum wind pressure withstanding capability.
- Multipoint locking function enhances the safety performance.
- Sliding system with gasket to achieve maximum airtightness.



SLIDE AND FOLD DOOR SYSTEM

- All door sashes can be folded to save space and pushed to the side.
- Slide and Fold doors offer generous and barrier free access to terraces, conservatories, conference rooms, wherever needed.
- Being equally suited to use as room dividers in hotels and catering establishments, Slide and Fold doors are also being increasingly used in homes.
- By using an aluminium threshold we can minimize the bottom frame height upto the floor level.

ELEGANT DESIGN IN FOCUS

KÖMMERLING gives high consideration to international design requirements and customers' personal needs. The profile systems developed are comfortable, economical, strong, and consist of an environmentally friendly material.

According to the weather and construction requirements of the Indian subcontinent, KÖMMERLING supplies various opening styles, such as horizontally sliding, outward-opening, and tilt and turn window and door systems.



FOCUS ON AESTHETICS

**KÖMMERLING uPVC
windows and doors are
available in woodgrain laminates.**

Woodgrain finish bestows a friendly, natural and aesthetic look to buildings. The vivid woodgrain structure looks and feels like natural wood. Combine these particularly high quality surface structures to your personal taste and style: woodgrain on the inside and outside, or woodgrain on the inside and neutral white on the outside – for windows that are designed to blend into the interior as well.

WOOD FINISH LAMINATION



Dark Oak
(Eiche Dunkel)



Mahogany
(Mahagoni)



Walnut V
(Nussbaum V)



QUALITY CONVICTION STANDARDS

Quality is of the highest importance. KÖMMERLING uPVC window systems fulfil the requirements of the American Standards AS 4420 and AS 2047. The company's Quality Management System was awarded the British Standards Institute (BSI) Certificate and Spanish AENOR.

Independent testing institutes and research centres in Germany and abroad very strictly supervise and certify the quality of our profiles and of the finished windows according to ISO 9000-9003. KÖMMERLING uPVC profiles are being manufactured as per DIN EN 12608 standard.



- KÖMMERLING profiles have their own unique formula created at the German headquarters. The uPVC matrix is monitored visually, chemically and physically in accordance with specifications, to attain the highest quality in manufacture, processing and use.

- KÖMMERLING has rigorous quality test standards. During the extrusion process, the dimensions of the profile cross-sections are constantly tested. Mechanical tests comprise the corner stability test of welded profile corners and the notch impact strength test to guarantee a consistently high quality level.



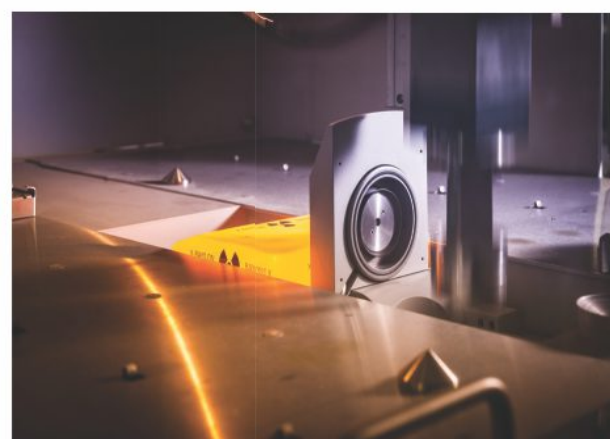
- The high quality of human resources is an important part of KÖMMERLING'S international quality system. At our training centres we impart knowledge regarding the technology of the KÖMMERLING profile systems and how to manufacture and install the finished windows.

- Be it raw material test mixing, extrusion or product quality control, KÖMMERLING undertakes all procedure in accordance with international standards.
- In order to keep improving, experienced German experts are responsible for the direction and supervision of production lines, and also of the window production and construction sites.

WE ARE CREATING THE WINDOWS OF THE FUTURE

RESEARCH AND DEVELOPMENT

KÖMMERLING thinks ahead. We pool our experience, expertise and innovative strength to transcend newer heights in excellence. We dedicate ourselves to ongoing research in the uPVC and window technology areas. With new-style materials, intelligent chamber systems and computer-optimised designs, we minimise the use of materials while maximising the benefits.



TURNING OUR VISION INTO REALITY

KÖMMERLING is proud to be a part of your life. Our uPVC windows and doors have proved their functional, aesthetic and qualitative credentials over the wide spectrum of residential, commercial, industrial and institutional requirements.



**LOOK AROUND.
YOU WILL FIND
KÖMMERLING
ALL AROUND YOU.**



DESIGNING THE FUTURE TOGETHER

Our innovative products provide a fresh stimulus for architecture and tomorrow's lifestyle. And we are well on our way with intelligent solutions like water resistance, sound resistance, thermal insulation, dust resistance, energy efficient, wind resistance, termite free and ecofriendly window and door systems. Our products are best for all kind of residential structures, high-rise structures, offices, factories, hospitals, hotels, etc. We are committed for a better world and ask you to join us in designing the future together.

TO EXPERIENCE OUR PRODUCTS IS TO FALL IN LOVE WITH THEM.

“

"After using KÖMMERLING for over a year, I highly recommend these windows. Their sound proofing and water resistance actually work. Despite overlooking a very busy road, my house is peaceful and also water doesn't seep in during lashing rains."

-Kavitha Padiyoor

”

It was my architect who insisted on KÖMMERLING. But I was convinced only after I found out more. The quality, industry-best features, and innovations like greenline make KÖMMERLING stand head and shoulders over other brands."

-Aditya Phukan

“

"I am very satisfied with the quality and appearance of KÖMMERLING uPVC doors and windows. I wanted something that matches the aesthetics of my home, and has superior quality. What make these windows even better are the features like sound insulation and protection from dust."

-Jaya Iyer

”

"KÖMMERLING windows and doors are value for money. But I found them so advanced and technologically superior that it was worth every rupee. I am glad I chose KÖMMERLING."

-Prashant Sharma

“

"KÖMMERLING windows and doors cut out the sound from outside to a great extent. My home is near the airport, and sound insulation is important to us. Thank you KÖMMERLING for bringing peace and quiet into our lives."

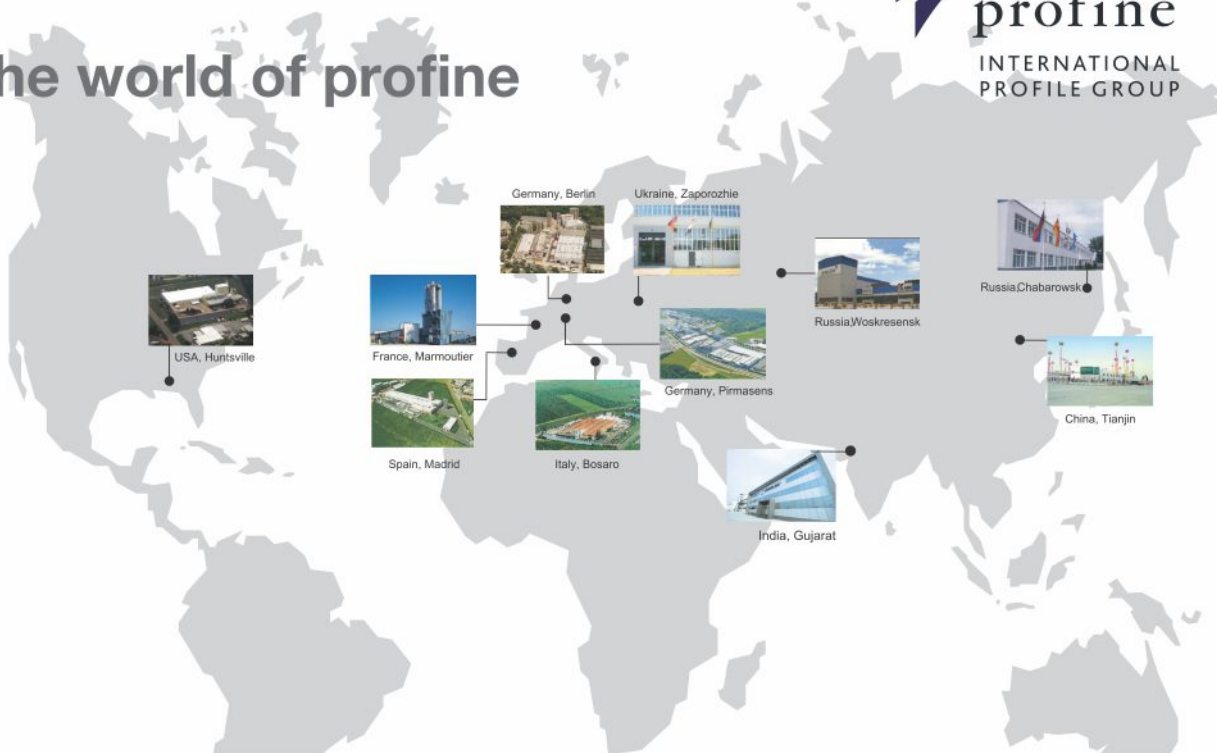
-Mrinalini Rao

”

"When I decided to go for uPVC windows for my home, I wanted the best. In KÖMMERLING, I found the most trusted and reliable of all the brands available. Its features are outstanding and the product is a great value for my money."

- Akul Tankha

The world of profine



profine India Window Technology Pvt. Ltd.

Registered & Corporate Office:

501-502, 5th Floor, Kailash Building,
26, K.G. Marg, New Delhi-110001, India

Phone: (+91) 11 42368600

E-Mail: info.india@profine-group.com

www.koemmerling.co.in

Showroom:

406, 4th Floor, V Times Square,
Sector 15, CBD Belapur,
Navi Mumbai-400614, Maharashtra, India

Works & Warehouse:

Plot No. 731/A, Savli Industrial Area, Manjusar GIDC,
Vadodara-391775, Gujarat, India

Head Quarters: profine GmbH

Mülheimer Strasse 26, 53840 Troisdorf, Germany

www.profine-group.com

